



TAS Overview





Table Of Contents

- [About TAS](#)
- [Custom Process and Industrial Automation](#)
- [SCADA/IIoT](#)
- [Telemetry & Wireless Networks](#)
- [UL508A Panel and VFD/Motor Control Fabrication](#)
- [Custom Fabrication](#)
- [Power Solutions](#)
- [Analytical Measurement Solutions](#)
- [Total Project Management](#)
- [Training](#)





TAS Vision and Mission

Vision

"To be the leading system integrator renowned for innovation, quality, and reliability, transforming the way businesses integrate technology. We envision a future where our solutions empower organizations globally, while fostering a culture of employee growth, creativity, and well-being."

Mission

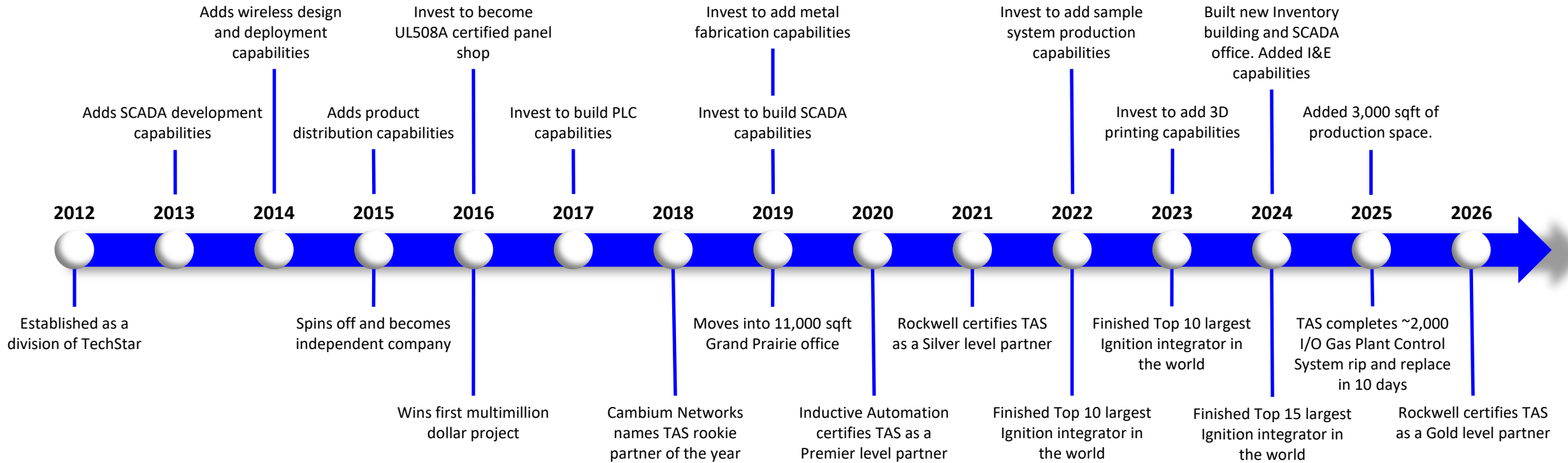
"Our mission is to deliver exceptional system integration services that exceed client expectations through cutting-edge technology and custom solutions. We are committed to nurturing a dynamic and supportive workplace where our employees thrive and are the cornerstone of our success. We strive to continuously innovate, adapt, and grow, ensuring that we not only meet the evolving needs of our clients but also contribute positively to the communities and industries we serve."





Milestones and Capabilities

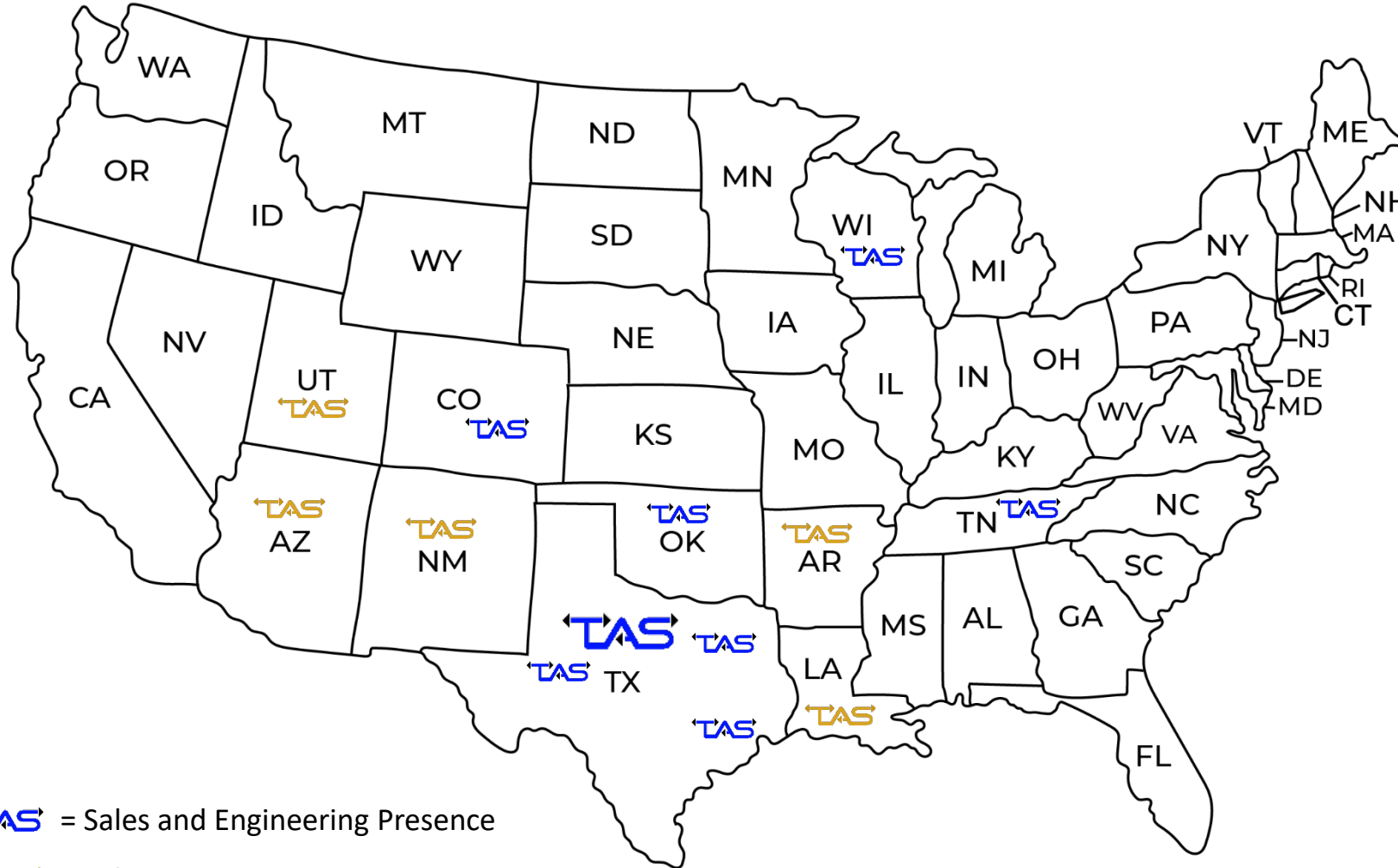
Investment and Capabilities



Milestones



Our Organization



= Sales and Engineering Presence

= Sales Presence



Headquarters and Annex in Grand Prairie, TX





Our Clients





- Project Management
- PLC Programming
- Panel Design/Building



- HMI Operator Panels
- DIN Rail Mounted Controllers
- Protocol Converters



- Edge IIoT
- PLC Programming
- Panel Design/Building



- Process Connectivity
- Intrinsic Safety Barriers



- Sensors
- Machine Safety
- Lighting and Indication



- Pressure & Temperature Transmitters
- Flowmeters
- Level Switches and Transmitters
- Liquid & Gas Analyzers



- Wireless Sensors & Networks
- Hazardous Area Rated
- Chemical Injection System



- Wireless Backhaul Networks
- Wireless Canopy Network Access
- Wi-Fi and IIoT



- Din Rail Mounted Power Supplies
- 1-Phase, 3-Phase & DC/DC Converters



- Enterprise level SCADA Systems
- Design, Development and Commissioning
- MES Qualified
- MQTT Experts
- Cloud Hosted SCADA Solutions
- Consulting Services





Industry Recognition



GOLD
System Integrator

A ROCKWELL AUTOMATION PARTNER



Cirrus Link
IIoT Integrator



OPTO PARTNER



IoT CERTIFIED



- **Custom Process and Industrial Automation**
 - Programming – PLCs, RTUs, HMIs, Embedded, etc.
 - Controls – Continuous, Batch/Blend, Access, Safety Lockout, Alarm Notification, etc.
 - Networking/Communications – Wired, Wireless, Fiber, Gateways, Protocol Conversion, etc.





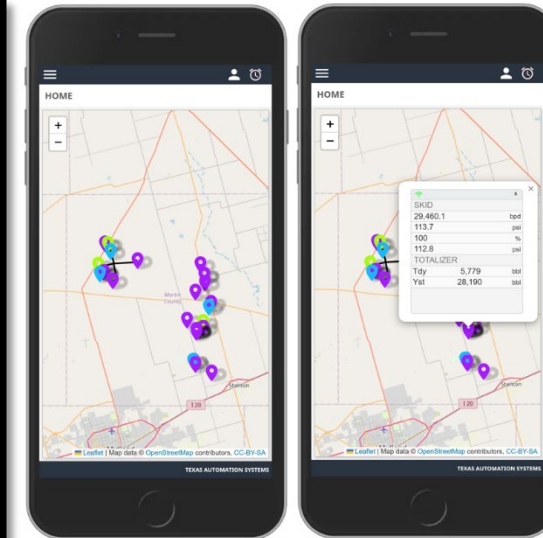
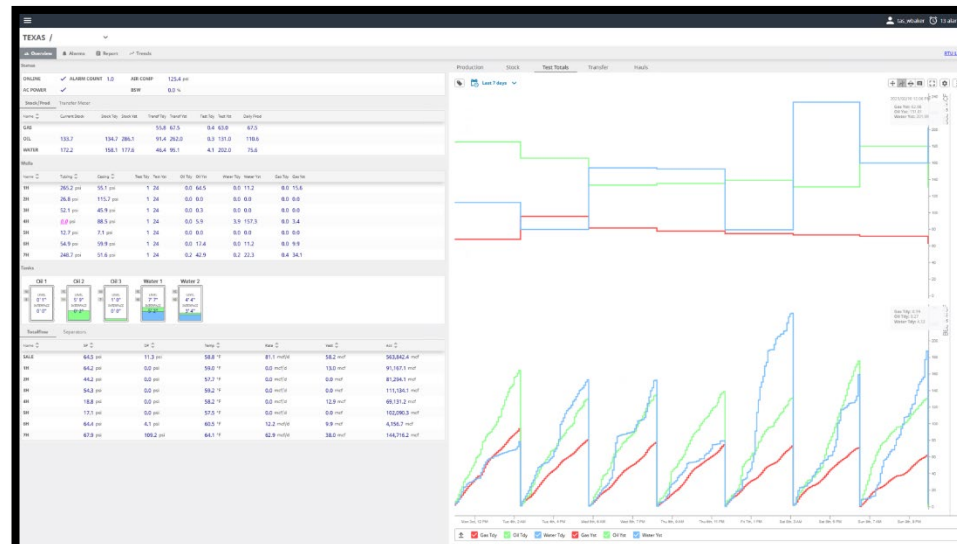
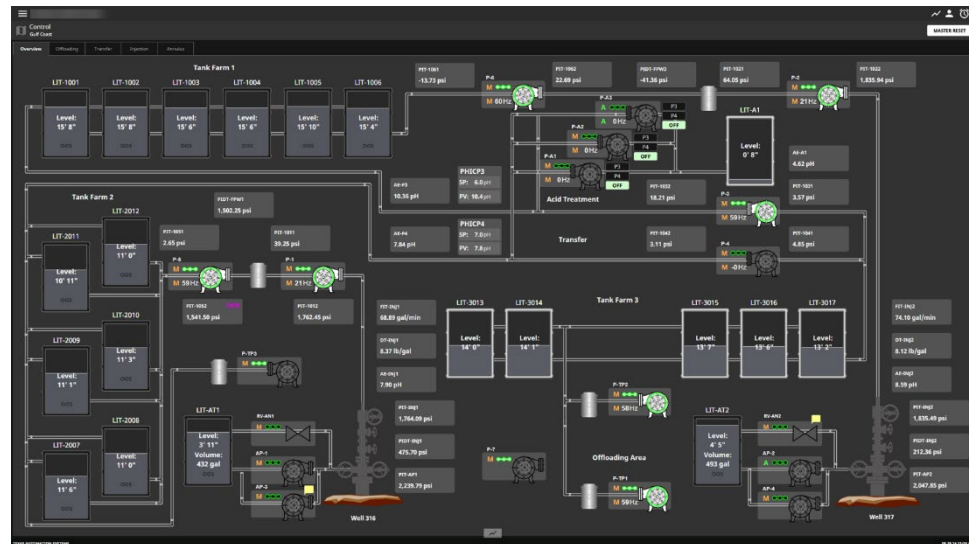
Our Capabilities

- **SCADA/IIoT**
 - TAS has obtained “Premier” status with Ignition SCADA and deployed more than 600 licenses
 - TAS currently has 7 Gold Certified developers with an additional 5 Core Certified
 - TAS is certified for PlantPax, FactoryTalk View SE and FT Optix
 - TAS also works on VTSCADA, iFix, and Wonderware platforms
 - Our largest project to date has more than 925,000 tags spread across more than 130 sites and is still growing.

of Completed Green-Field Projects: 105

of Gateways Configured: 300

of Tags: > 7,500,000





Our Capabilities

- **UL508A/NNNY Panel and VFD/Motor Control Fabrication**
 - Custom Panels - From simple to complex, built to your specifications or we can design it for you
 - Built-in Smart HMI - User Interface, Data Gateway/Interface Converter, Data Server, etc.
 - Environments - Class 1 Division 1, Class 1 Division 2, NEMAxx, etc.
 - Interfacing - Communication buses, I/O Signals, Wireless, etc.
 - Power - AC, DC and Solar (primary or backup)





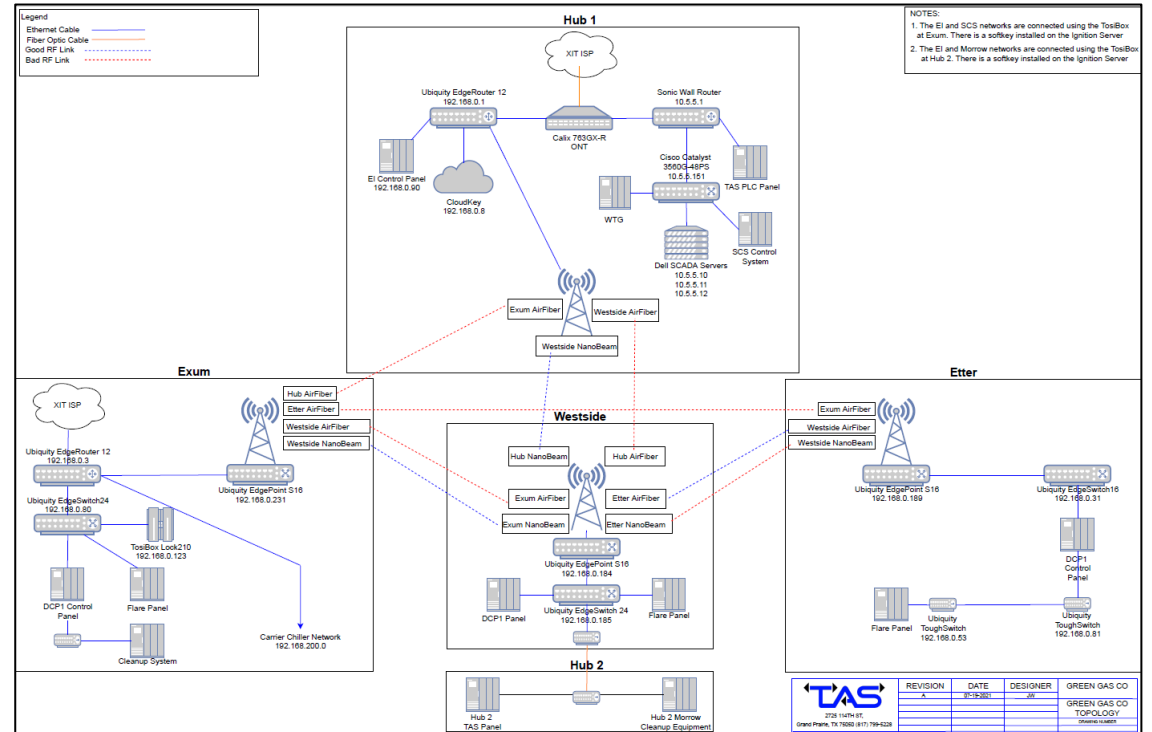
Our Capabilities

- **Custom Fabrication**
 - Solar
 - Skids
 - Racks
 - Portable
 - Shelters



Telemetry & OT Networks

- Any measurement, protocol or location
- Front end consultation and design (architecture, path studies, link planning, site surveys)
- Turnkey implementation (towers, power consideration, radios, commissioning)
- System maintenance and optimization





Our Capabilities

- **Power Solutions**
 - Solar + Battery Power Solutions
 - Battery Backup Solutions
 - UPS Solutions
 - Custom Designed





Our Capabilities

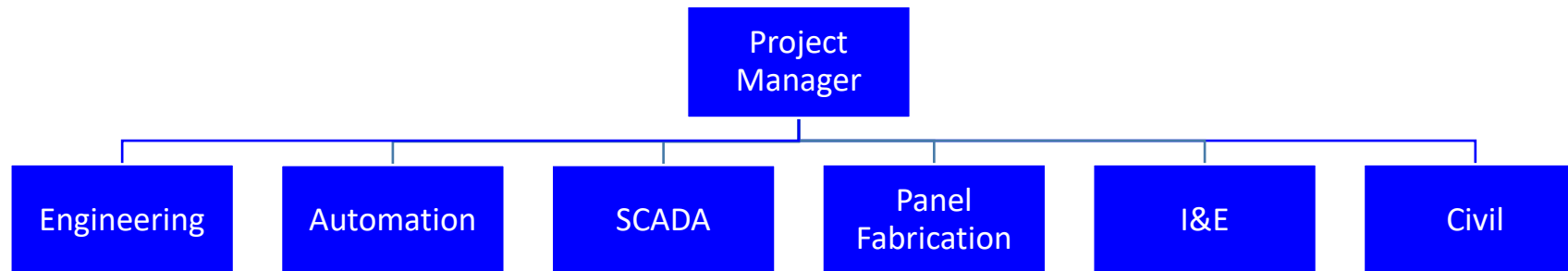
- **Analytical Measurement Solutions**
 - Turn-key Racks
 - Sample Control Panels
 - Airflow Control Panels



- **Instrumentation and Electrical (I&E)**
 - Installation of Electrical Equipment and Wiring as related to Automation projects
 - Installation of Control Panels and Instrumentation
 - Point-to-Point Checks



- **Total Project Management**
 - Overall Project Management
 - Sub-Contractor Selection and/or Management (when needed)
 - Reporting and Documentation



- **Training (In-Person and Virtual)**
 - Basic Instrumentation Course
 - Modbus Course
 - Intro to PLC Course
 - Custom Training – Specific to custom solution we build for you



Thank you!